

PRODUCT PROFILE

BULLETIN 700-FF

BULLETIN 700-FF FIXED TIME DIN RAIL TIMING RELAY

Allen-Bradley is continuing to expand our offering of DIN Rail mounted Timing Relays by introducing the 700-FF Fixed Time DIN Rail Timing Relay.

The ultra-thin, 22.5 mm wide, molded enclosure will save considerable mounting space on the DIN rail and provide reduced power consumption.

The fixed time feature of the 700-FF makes it a cost-effective alternative to the adjustable timer. DIN Rail mounting capability eliminates the cost of a socket.

ADVANTAGES

- Electromechanical SPDT or DPDT Contact output
- Fixed Timing available between 0.1 seconds to 10 hours
- Specific part number predetermines time and function settings making them tamper resistant in the field
- More cost effective than fully featured models
- DIN rail mount allows increased accessibility for quick and easy installation
- Dust, moisture and impact-resistant molded plastic case
- Utilizes the 1492 Fast Track™ Marker System

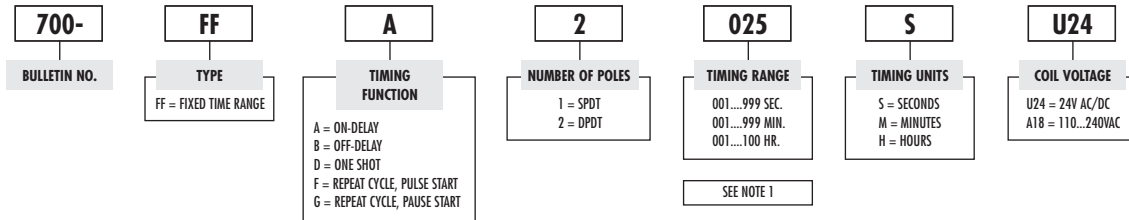


- Five Single Functions Available
 - On-Delay
 - Off-Delay
 - One Shot
 - Repeat Cycle, Pulse Start
 - Repeat Cycle, Pause Start

ESSENTIAL COMPONENTS.
EXCEPTIONAL VALUE.

PRODUCT SELECTION, SPECIFICATIONS

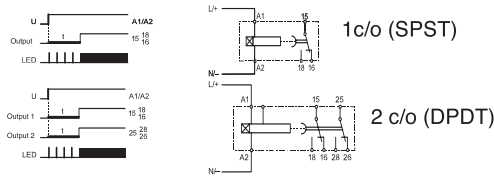
700-FF with Fixed Time Range



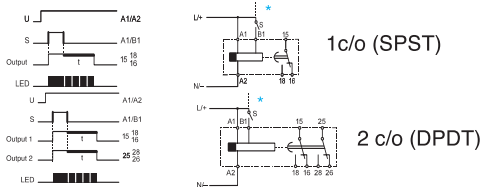
NOTE 1:
THIRD POSITION IS DECIMAL POINT (025S = 2.5 SECONDS, 025M = 2.5 MINUTES, 025H = 2.5 HOURS).

700-FF Function and Connection Diagrams

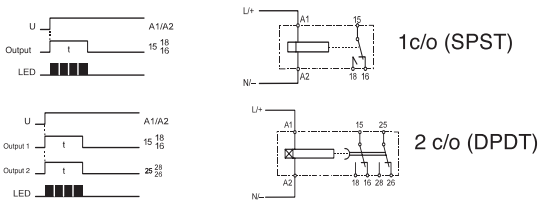
(A) On-Delay



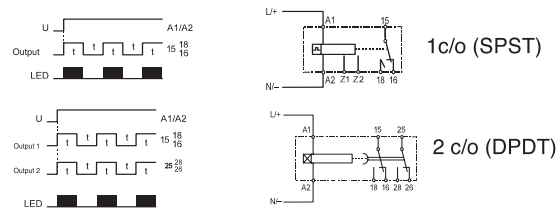
(B) Off-Delay (Min. Pulse AC 50 ms....DC 30 ms)



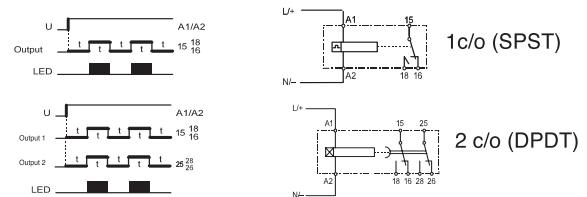
(D) One Shot



(F) Flasher (Repeat Cycle Starts with Pulse)



(G) Flasher (Repeat Cycle Starts with Pause)



Cleverly Designed Function Display LED (Green)

- Output in rest position, no timing
- ||||| Output in rest position, time running
- Output in operation position, no timing
- ■ ■ ■ Output in operation position, time running

* A VOLTAGE OTHER THAN THE SUPPLY VOLTAGE CAN BE USED AT B 1, BUT MUST BE WITHIN VOLTAGES SPECIFIED ON TIMER.

www.rockwellautomation.com

Power, Control and Information Solutions Headquarters

Americas: Rockwell Automation, 1201 South Second Street, Milwaukee, WI 53204-2496 USA, Tel: (1) 414.382.2000, Fax: (1) 414.382.4444
 Europe/Middle East/Africa: Rockwell Automation, Vorstlaan/Boulevard du Souverain 36, 1170 Brussels, Belgium, Tel: (32) 2 663 0600, Fax: (32) 2 663 0640
 Asia Pacific: Rockwell Automation, Level 14, Core F, Cyberport 3, 100 Cyberport Road, Hong Kong, Tel: (852) 2887 4788, Fax: (852) 2508 1846