

Connected Component Workbench

Task-based Quick Start

QS# GS07 – Downloading a Project to a Controller and Troubleshooting Faults

LISTEN.
THINK.
SOLVE.®

 *Allen-Bradley • Rockwell Software*

**Rockwell
Automation**

Copyright © 2009 Rockwell Automation, Inc.

Hardware & Software Versions Used to Develop This Quick Start

- CCW Release 1, Build 51
- Micro830, 2080-LC30-16QWB

Prerequisite

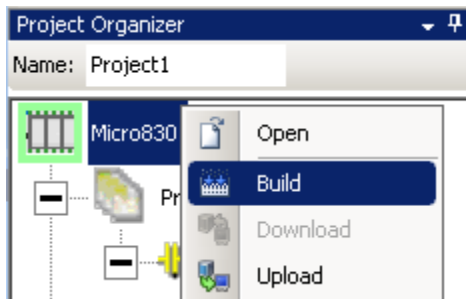
- QS06 Establishing Communications to a Micro830 Controller

Downloading a Project to a Controller and Troubleshooting Faults

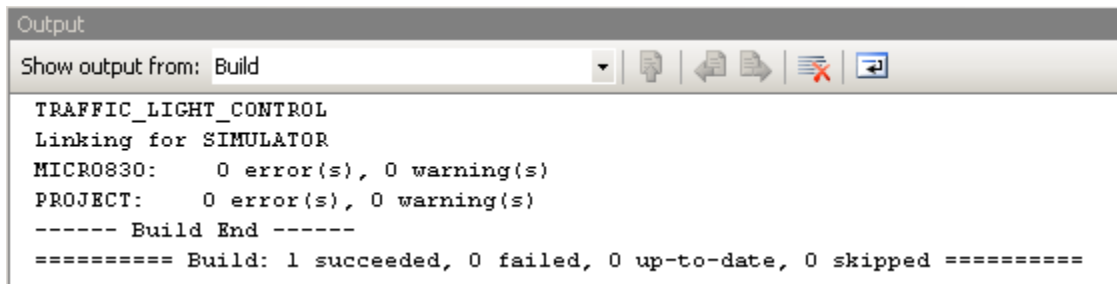
This quick start will show you how to download a project to a controller and how to troubleshoot faults that may appear after downloading a project. Prior to downloading a project you must connect to the controller, refer to QS 06 Establishing Communications to a Micro830 Controller, for more details on how to connect to the Micro830 controller.

1. Follow the instructions below to build, save, and download your project.

Right click on the Micro830 icon in the **Project Organizer** and select **Build**.



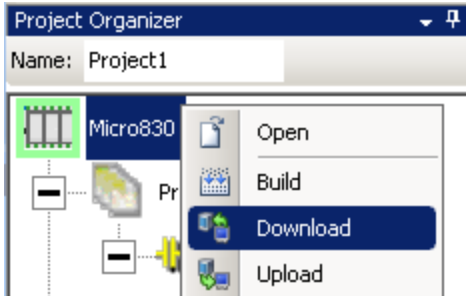
2. You should get verification in the Output window at the bottom center of the screen that the build succeeded. If you have errors you must go back to your program and fix the error before it will allow you to download.



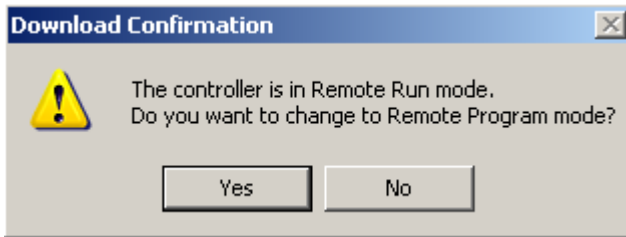
3. After verifying you don't have errors, click the **Save** icon to save your work.



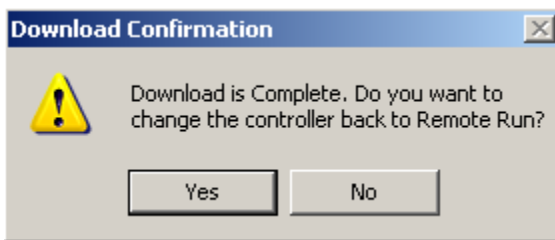
4. Right click on the Micro830 icon in the **Project Organizer** and select **Download**.



5. If your controller is in Remote Run mode you will see the following message. Click **Yes** to continue.



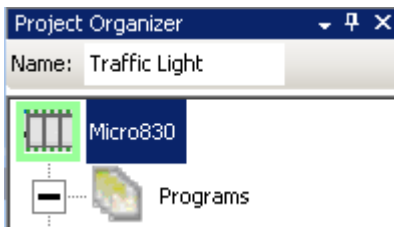
6. After the download is complete you will see a message asking if you want to change to Run mode. Click Yes to begin running your program or No if you need to make further modifications.



Troubleshooting Faults

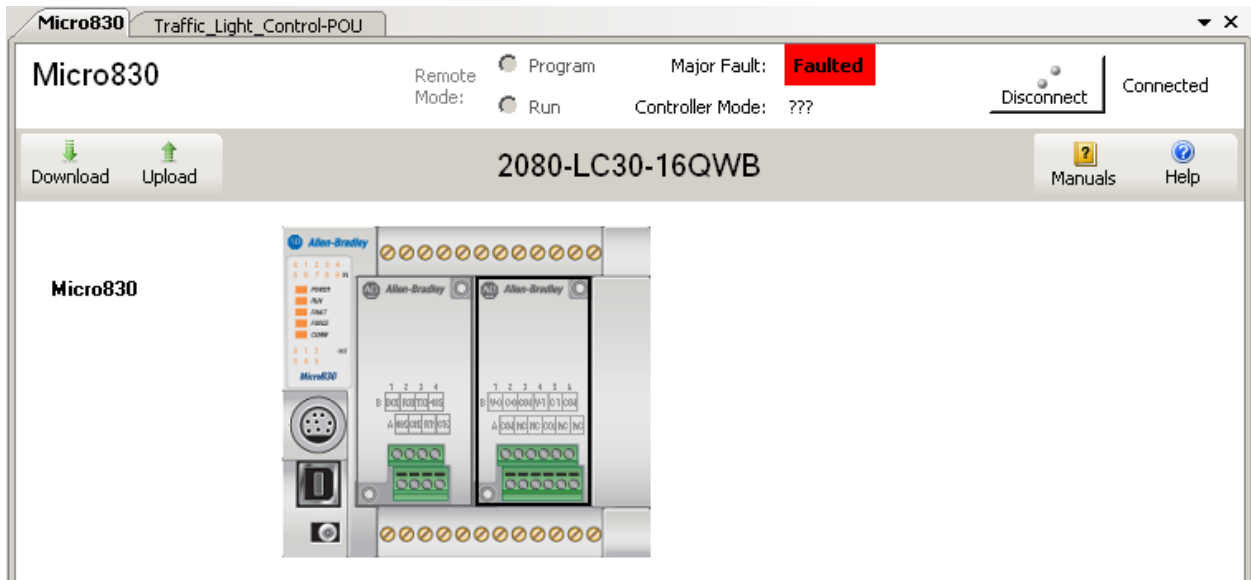
In this section you will learn how to troubleshoot faults that may appear after you download a project. One of the common faults you may see is a configuration mismatch between your project and the controller. In this section you will learn how to troubleshoot that fault and how to fix it.

1. Double click on the **Micro830** icon on the **Project Organizer**.

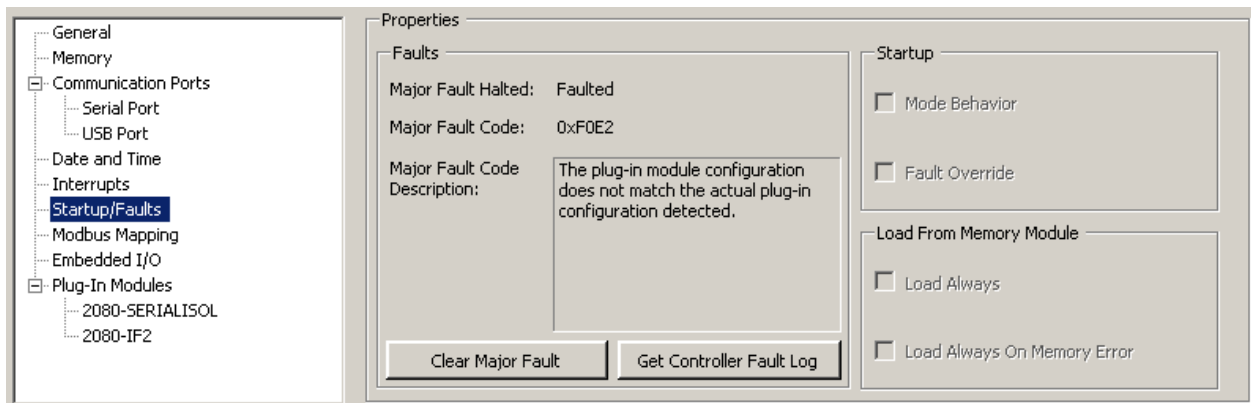


You should see a window with Micro830 information. This window gives you status information for your controller and allows you to configure the plug-ins and other parameters.

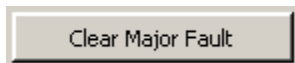
- Below is a screen shot of a faulted Micro830, notice how there is a red icon that displays **Faulted**. This indicates a fault occurred after the project was downloaded.



- To troubleshoot faults, click on **Startup/Faults** found under the **Controller Configuration** tree. To the right of the screen you will see a fault description. For this fault example the plug-in I/O module configuration does not match the actual I/O configuration detected. This means there is a configuration mismatch between the project and the hardware.



- To clear the fault click **Clear Major Fault**.



- Now that you've cleared the error you must fix the configuration mismatch so you don't see this error again. To fix the configuration mismatch you will have to update the plug-ins in slot 1 and 2 to match your hardware. To do this you will simply right click on each plug-in slot and select the appropriate module. After you update the configuration you must build, save, and download the project and the fault will no longer show up.