

Connected Components Workbench

Task-based Quick Start

QS# GS10 – Saving and Closing a Project

LISTEN.
THINK.
SOLVE.®

Hardware & Software Versions Used to Develop This Quick Start

- Micro830. 2080-LC16QWB, FRN 0.40
- Standard USB A/B cable (3 meter maximum)
- RSlinx Classic version 2.55
- Windows XP, Service Pack 3

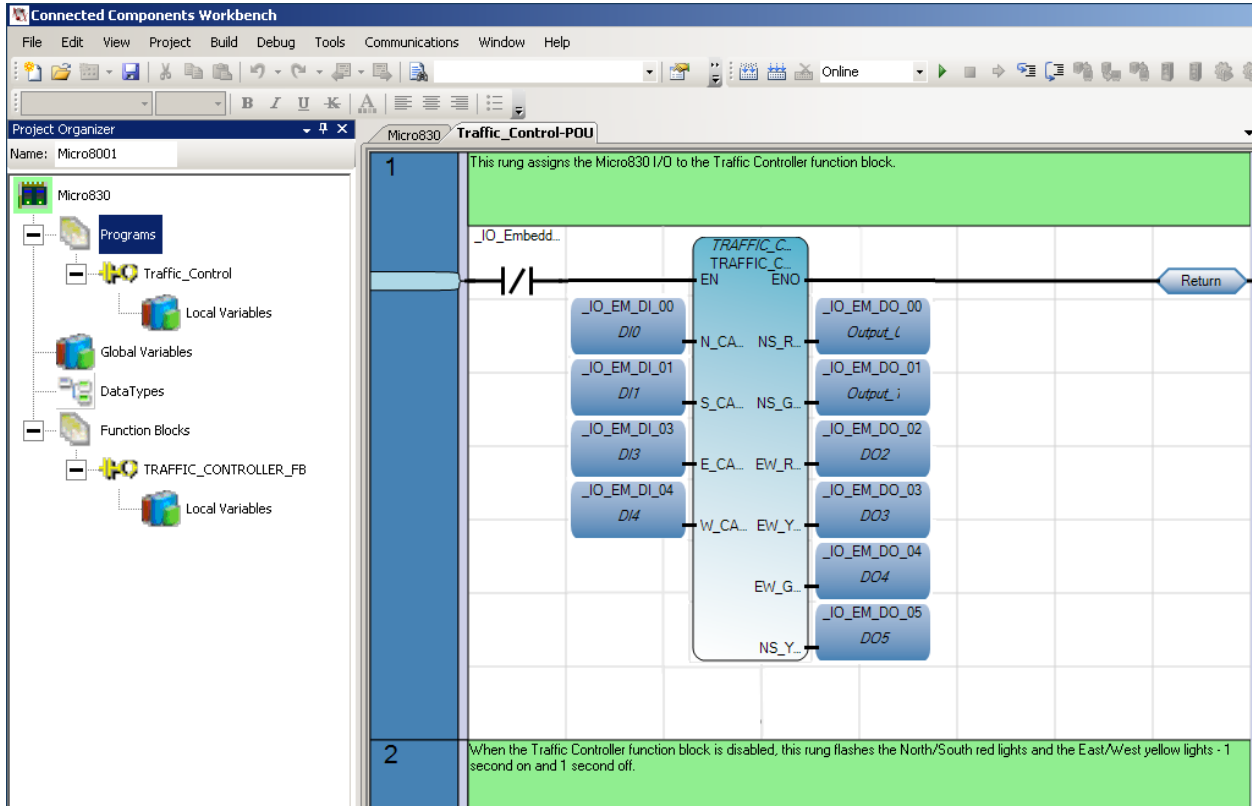
Prerequisite

- QS-GS08, QS-GS09, or QS-GS10

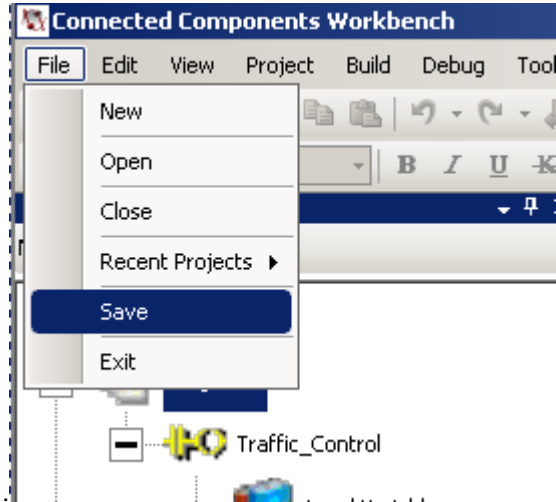
Saving and Closing a Project

This quick start will show you how to save and close a project for the Micro830.

1. From an open project.



2. To save, click on File in the tool bar.

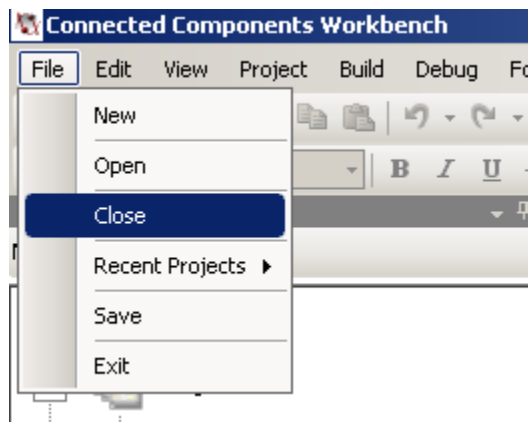


3. Select and click Save. The project is now saved. The project file, will be saved in the project folder, under the CCW folder under My Documents.

```
C:\Documents and Settings\Labuser\My Documents\CCW\Micro8001\Micro8001.ccwsln
```

Note: Please know where your project is saved to. Under My Documents/CCW/...

4. To close, click on File and select Close.



5. The Connected Components Workbench will now look like this.

