

# Connected Components Workbench Task-based Quick Start

## QS# GS13 – CCW Software Requirements and Installing the Software

LISTEN.  
THINK.  
SOLVE.®

 *Allen-Bradley • Rockwell Software*

**Rockwell  
Automation**

Copyright © 2009 Rockwell Automation, Inc.

## Hardware & Software Versions Used to Develop This Quick Start

### Software requirements

Connected Components Workbench software has been successfully tested with the following operating systems versions and service packs:

Operating system	Tested versions (and service packs)
Microsoft® Windows® XP® Professional	Microsoft Windows XP Professional (32-bit) with Service Pack 3  This version of Connected Components Workbench is expected to operate correctly on all other editions and service packs of Microsoft Windows XP (excluding Windows XP Home).
Microsoft Windows Vista®	Microsoft Vista Business (32-bit) with Service Pack 2.  Microsoft Vista Home Basic (32-bit) with Service Pack 2.
Microsoft Windows 7®	Microsoft Windows 7 Home Basic (32-bit).  Microsoft Windows 7 Home Premium (32-bit).

### Hardware requirements

To use Connected Components Workbench effectively, your personal computer must meet the following hardware requirements:

Component	Minimum requirement	Recommended
Processor	Pentium 3 or better	Pentium 4 or better
Speed	2.8 MHz	3.8 GHz
RAM Memory	512 MB	1.0 GB
Hard Disk Space	3.0 GB free	4.0 GB free
Optical Drive	CD-ROM	CD-ROM
Pointing Device	Any Windows-compatible pointing device	Any Windows-compatible pointing device

---

## Installing the CCW Software (Free Version)

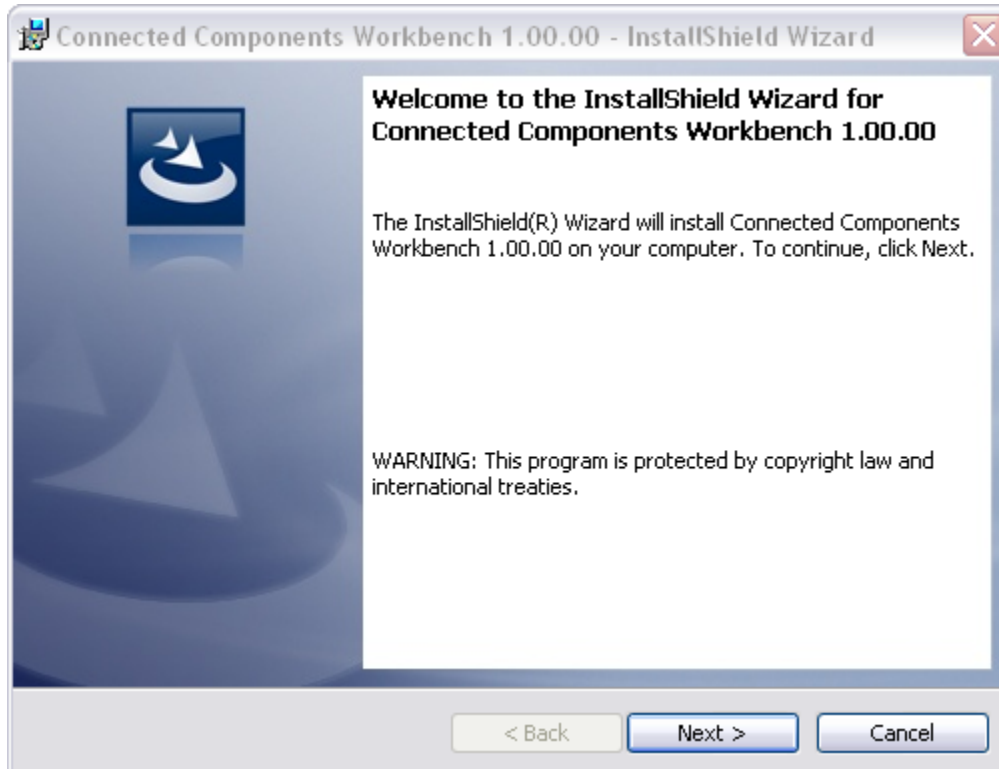
This quick start will show you first how to install the CCW software for the free version. If you have the developer version, this quick start will show you that installation process ahead.

1. Insert the Connected Component Workbench (CCW) CD-ROM.  
In case the software doesn't launch automatically. Explore the content of the CD and double click on

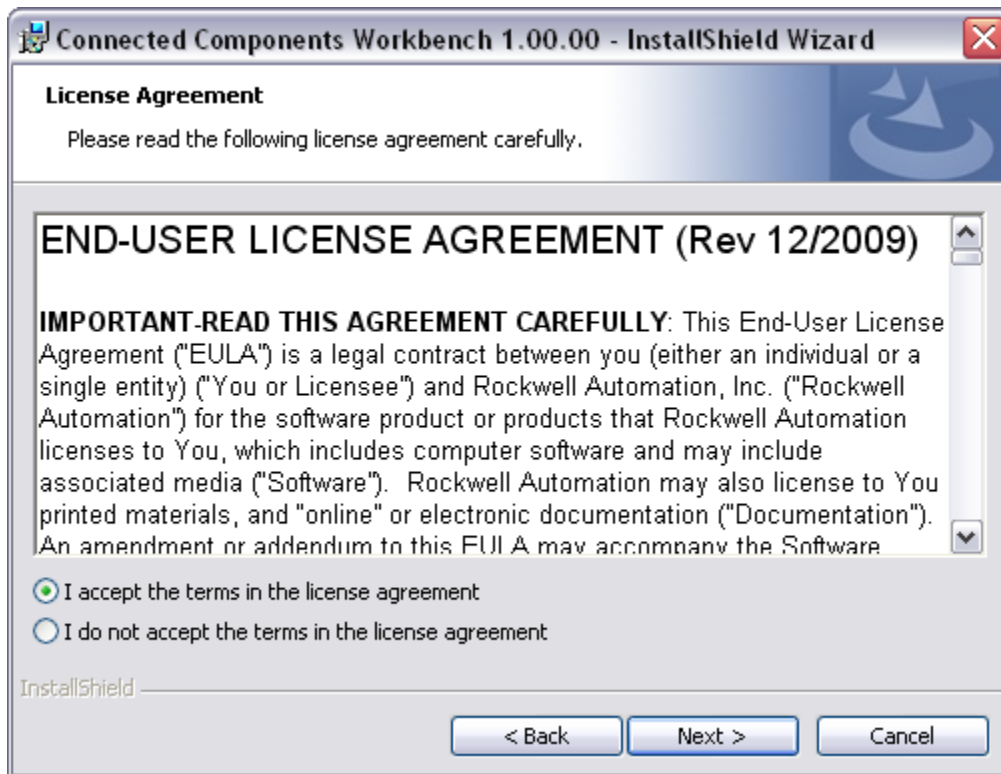


the **Connected Components Workbench Setup** icon .

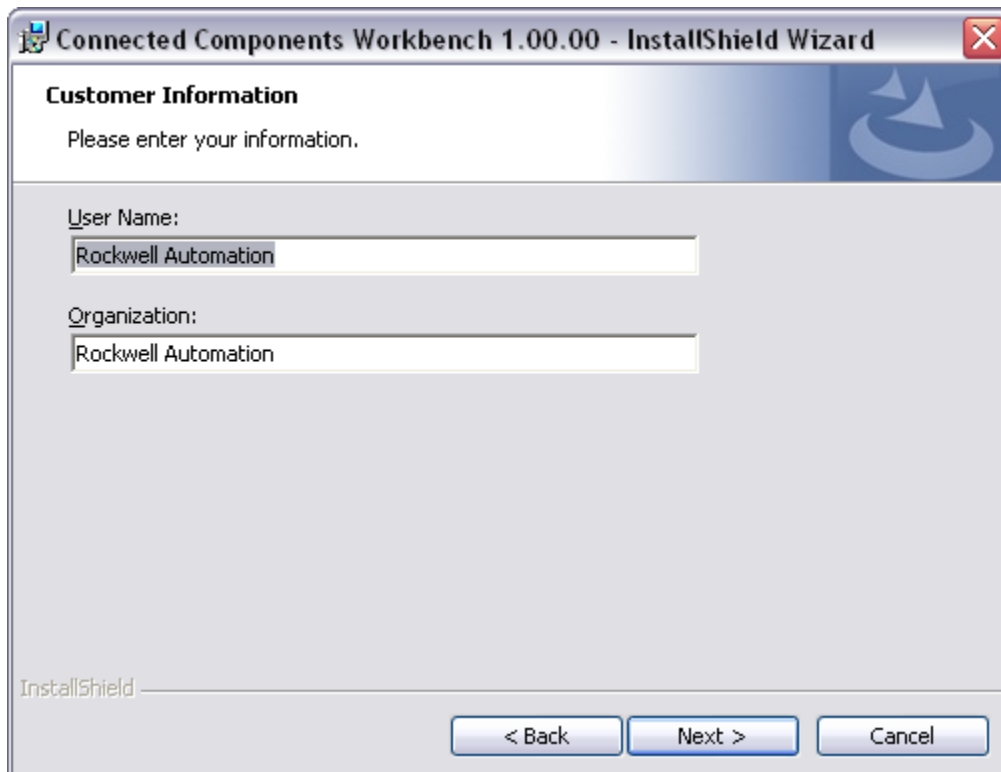
2. The InstallShield Wizard appears. Click **Next** to continue:



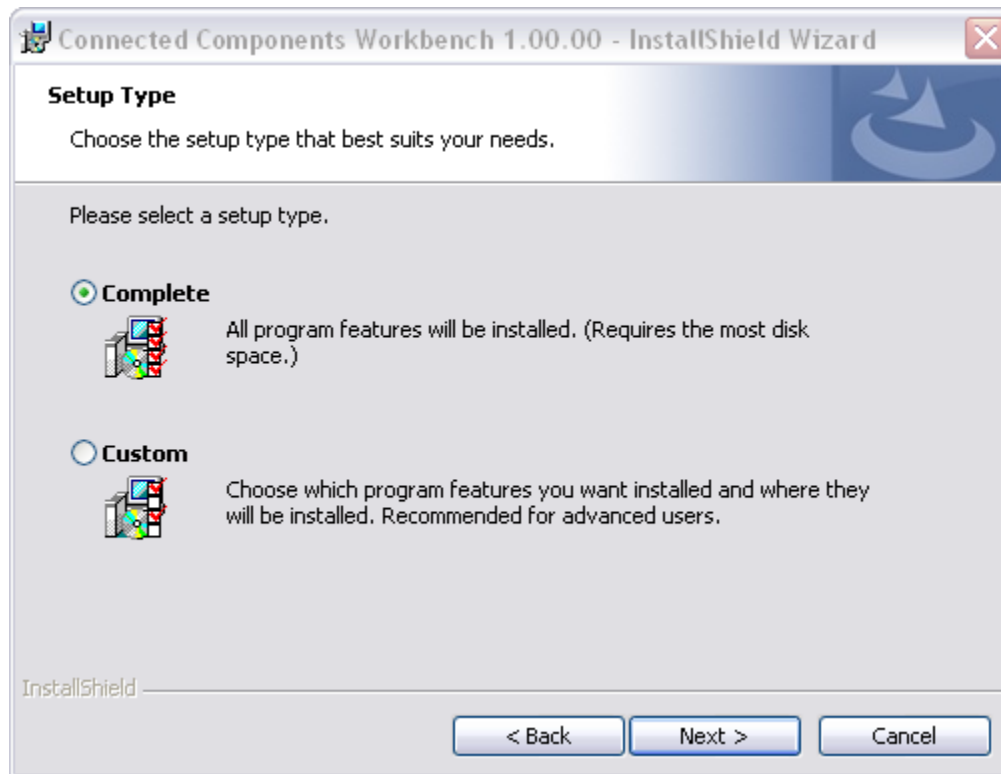
3. Review the terms in the License Agreement. Select accept and then click **Next**:



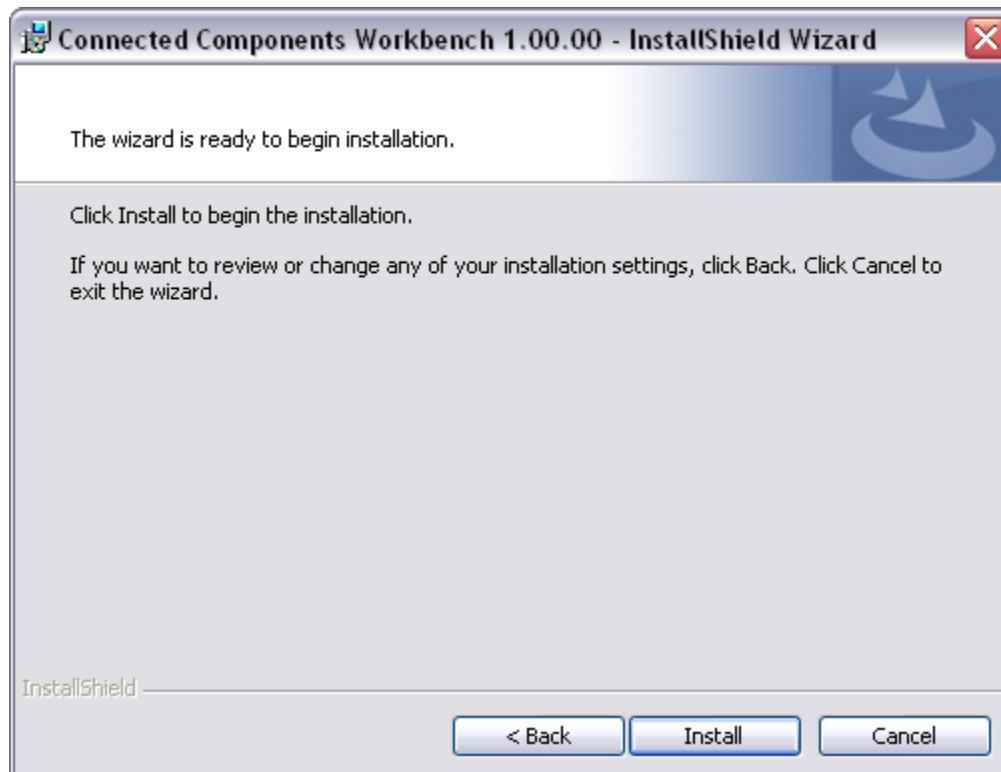
4. Enter Information in fields and then click **Next**:



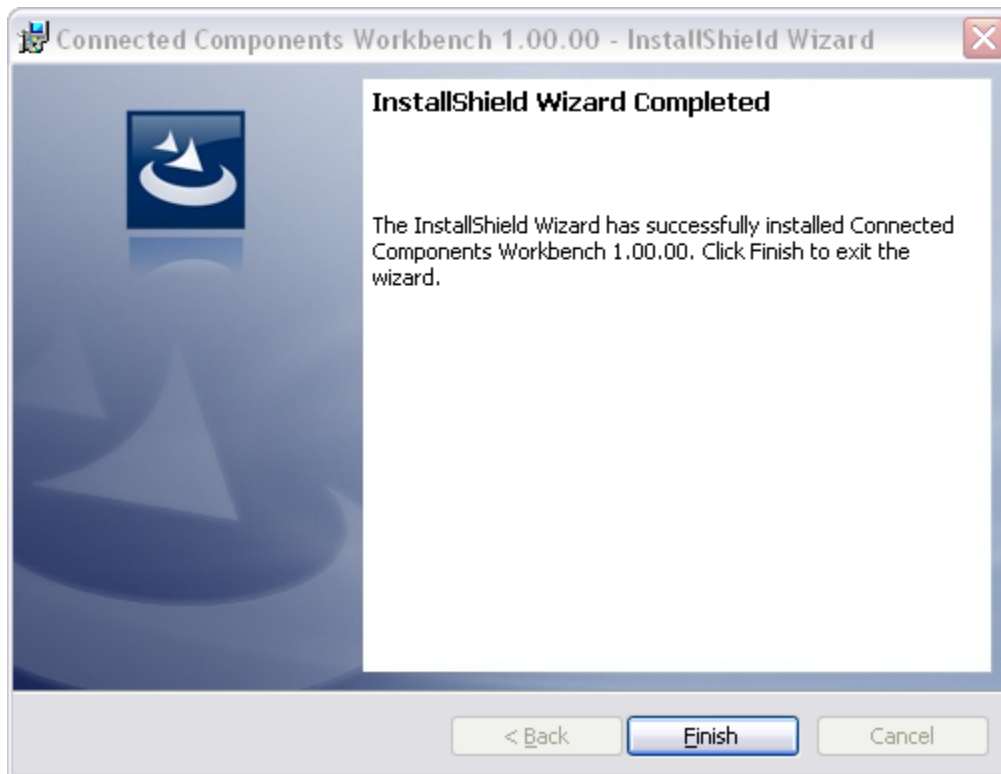
5. Select setup type (Complete install Recommended) and then click **Next**:



6. Click **Install**:



7. The installation process is now complete for the CCW (Free Version). Click **Finish** to complete:



---

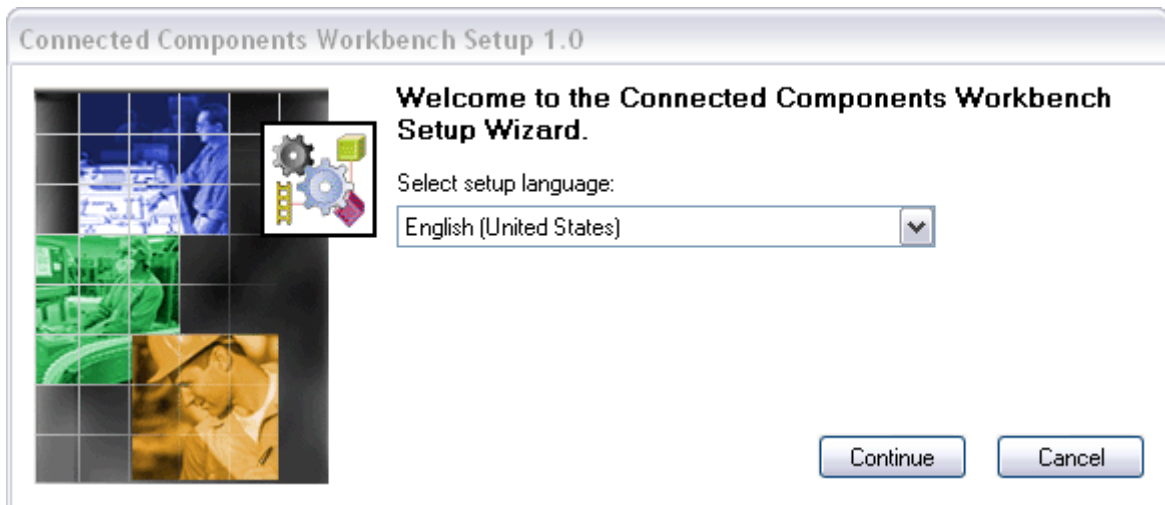
## Installing the CCW Software (Developer Version)

1. Insert the Connected Component Workbench (CCW) CD-ROM.  
In case the software doesn't launch automatically. Explore the content of the CD and double click on

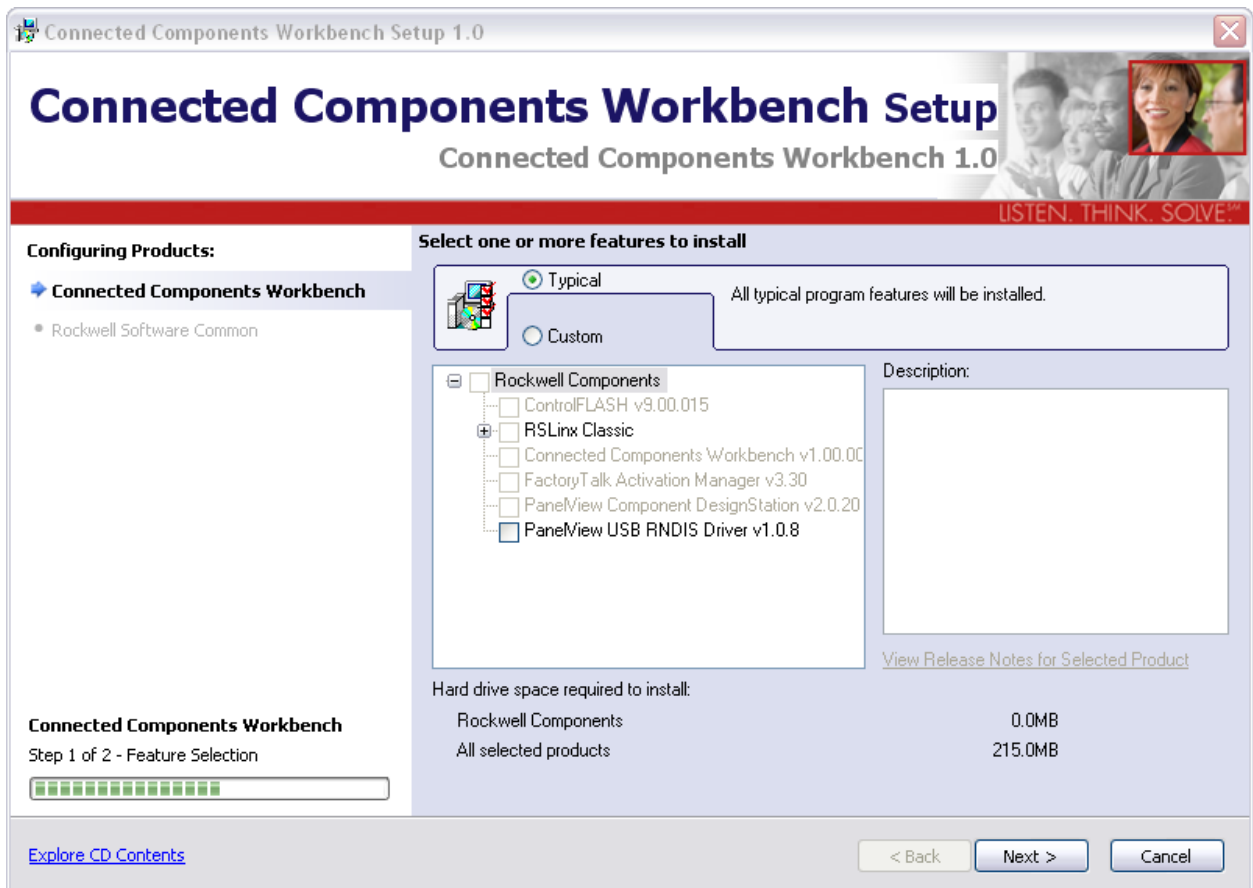


the **Connected Components Workbench Setup** icon `CCWSetup .`

2. Select the setup language and click **Continue**.



3. Select a **Typical** install and click **Next**. This quick start assumes that Factory Talk Activation software is already installed, but if it's not the case, just follow the Factory Talk wizard when it appears in the CCW Installation process.



4. Enter your **Serial Number** and click **Next**.

Connected Components Workbench Setup 1.0

## Rockwell Software Common Setup

Connected Components Workbench 1.0

LISTEN. THINK. SOLVE.™

**Configuring Products:**

- ✓ Connected Components Workbench
- **Rockwell Software Common**

**Rockwell Software Common**  
Step 1 of 3 - Customer Information

**Please enter the following information**

User Name:

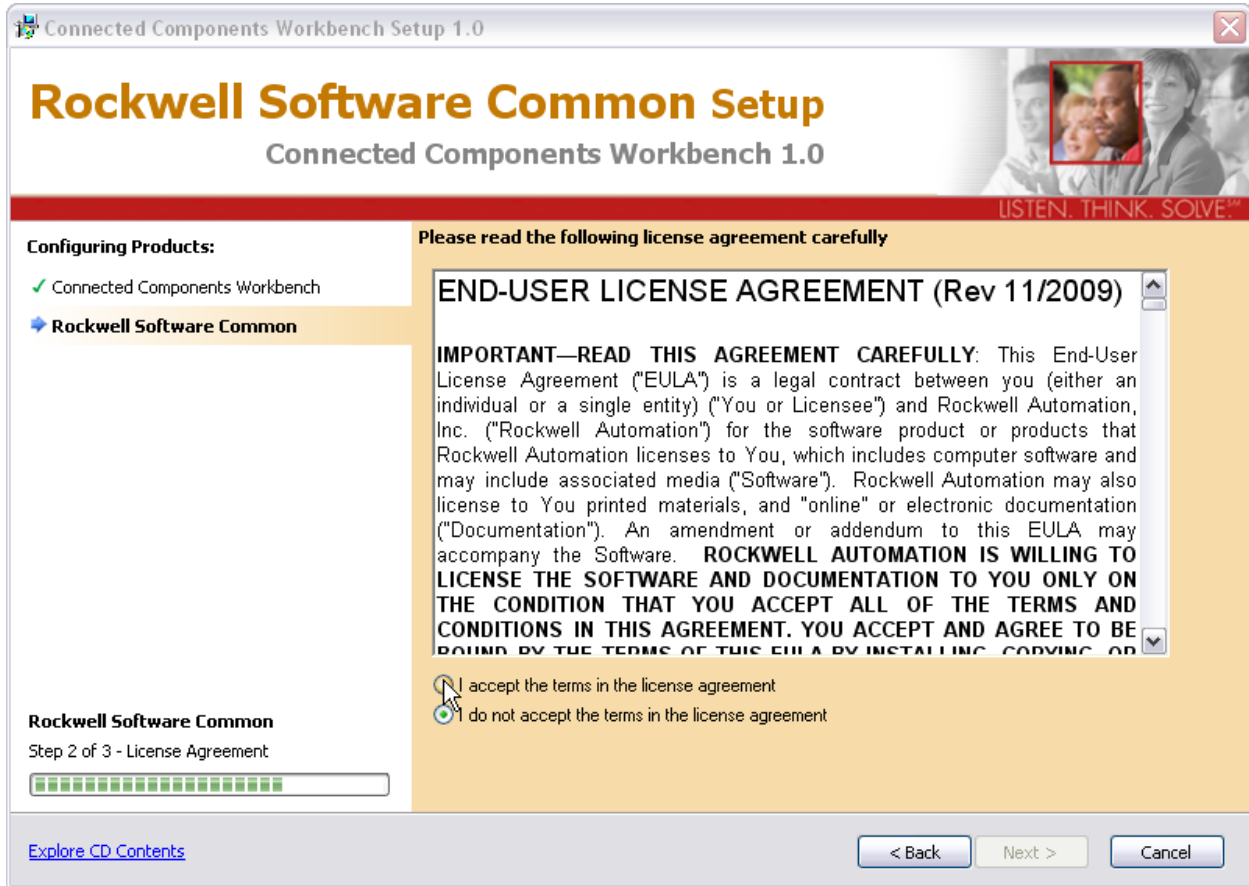
Organization:

Serial Number:

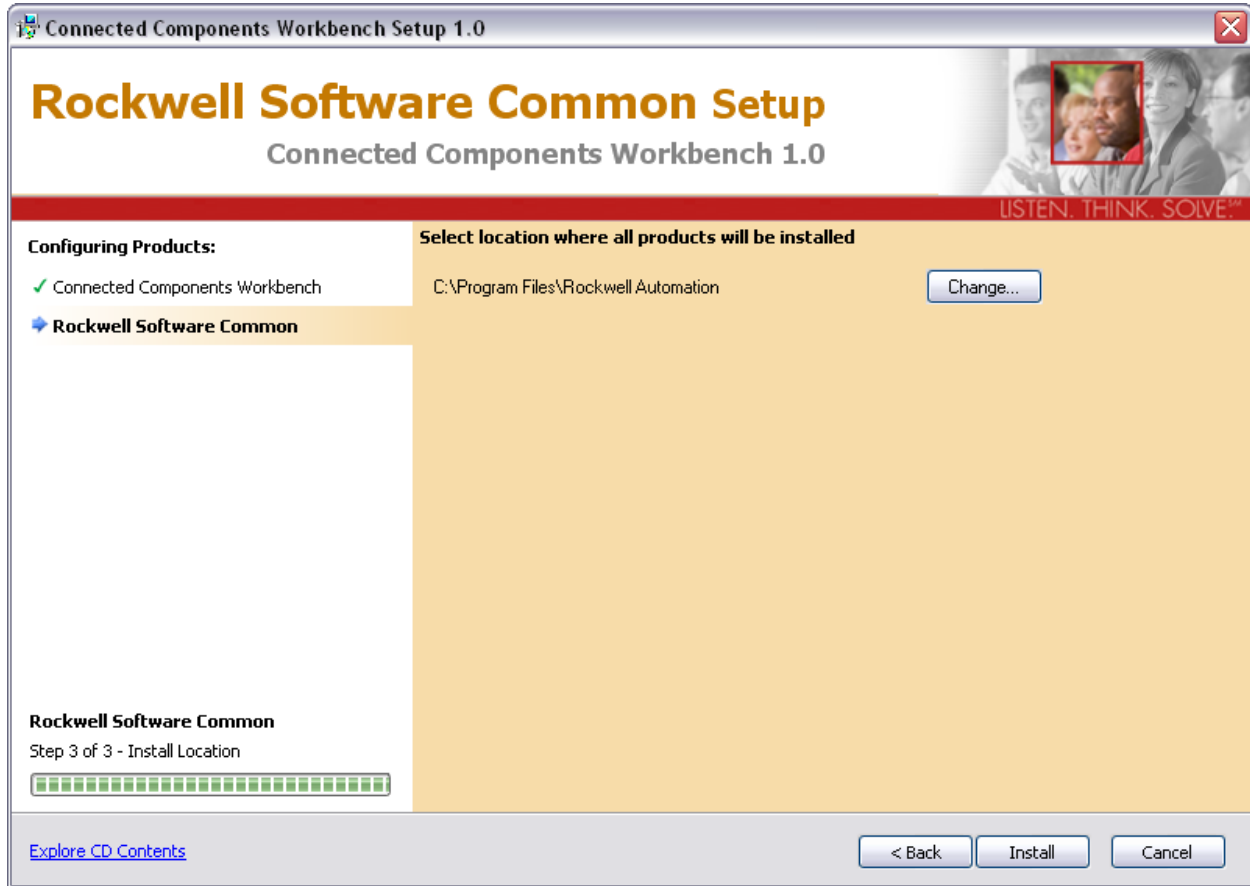
[Explore CD Contents](#)

< Back   Next >   Cancel

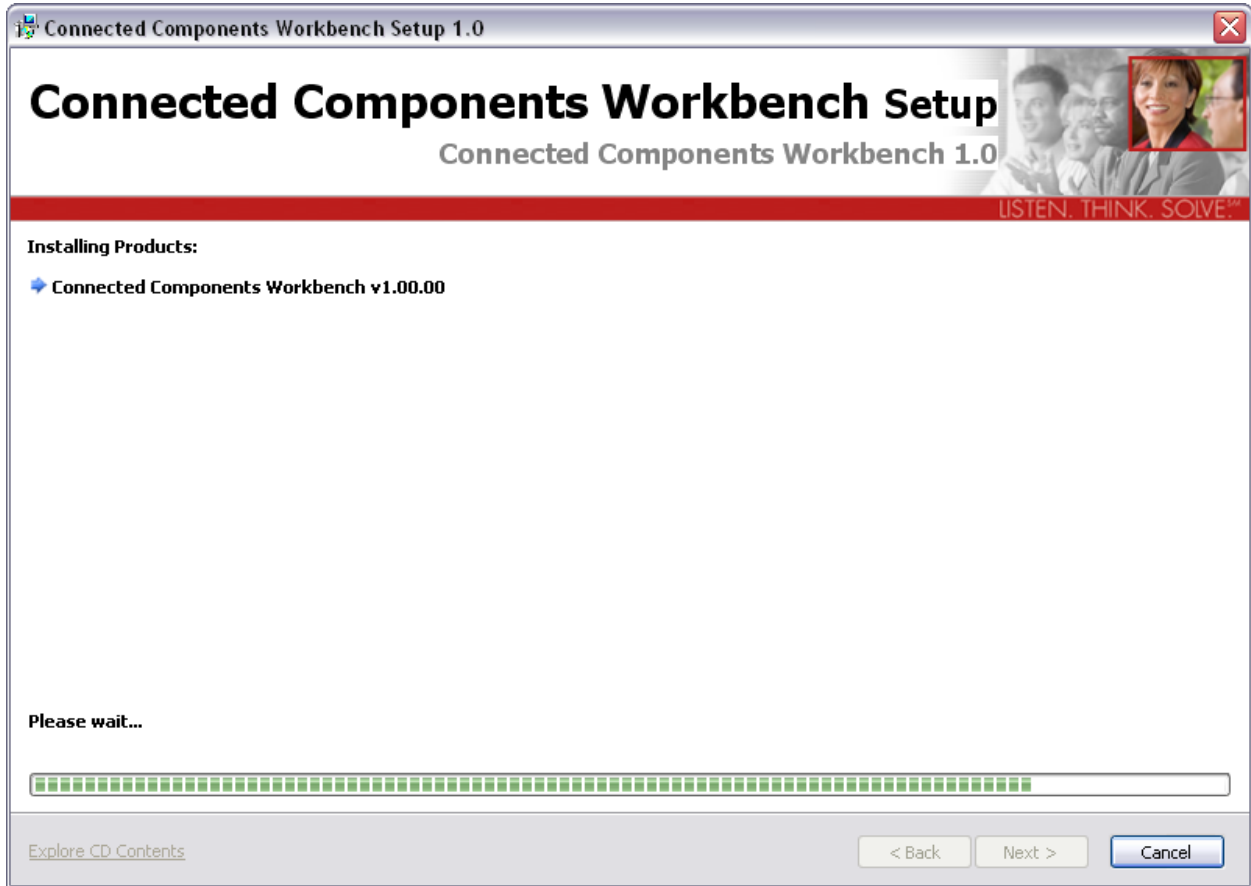
5. Read and accept the terms in the license agreement and then click **Next**.



6. CCW is ready to be installed. Click **Install** to start the installation process.



7. Depending on the selections made in Step 3 of this quick start, the installation screen shown below will display what will be installing.



8. CCW is now installed. Select to activate the product and click **Finish**. You need to activate the software by following the steps of a **Factory Talk Activation**. For Help with Factory Talk Activation, please refer to the support site at <http://www.rockwellautomation.com/support/activations.html>

